

## FITTING DE HDPE

### Dimensiones

Los accesorios de tubería se pueden fabricar de tubería en una amplia variedad de tamaños y clases de presión, pero sobre todo de 75 mm de diámetro exterior hacia arriba y de clase 6 o superior. Los accesorios pueden ser de acabado liso (para soldadura a tope, accesorios de electrofusión) o tienen talones para bridas o abrazaderas. La presión de trabajo admisible es del 60% de la clase de tubería utilizada para fabricar el ajuste. p.ej. El tubo de 10 bar produce un accesorio fabricado de 6 bar

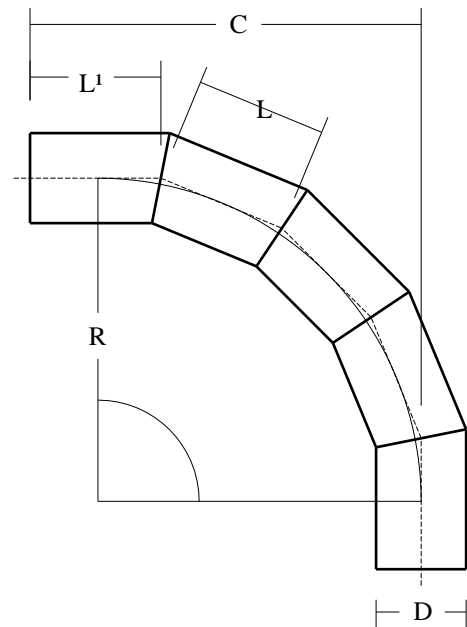


Calculated using PE 100 material.

### Codo segmentado (Casquetes)

#### 90° Codo

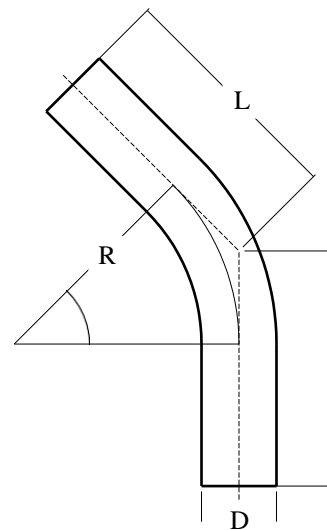
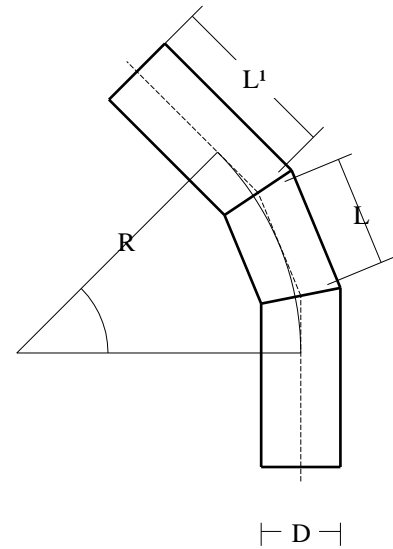
OD D (mm)	L (mm)	C (mm)	L' (mm)	R (mm)
110	155	478	160	395
125	155	478	160	395
140	155	478	160	395
160	155	478	160	395
180	155	478	160	395
200	250	792	280	637
225	250	792	280	637
250	250	792	280	637
280	250	792	280	637
315	250	792	280	637
355	380	1178	400	968
400	380	1178	400	968
450	380	1178	400	968
500	380	1178	400	968
560	470	1450	560	1350
630	590	1800	600	1520



Angles other than 90° and 45° can be manufactured on request.

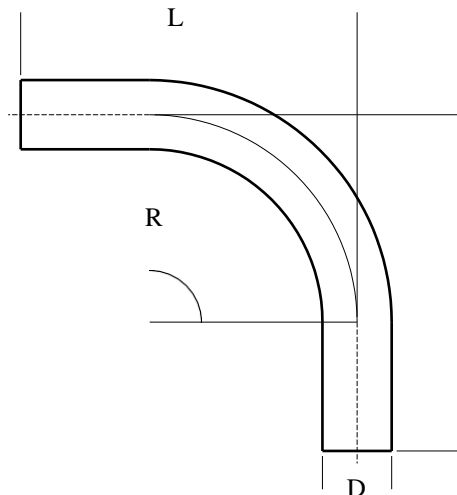
## 45° Codo

OD D (mm)	L (mm)	L' (mm)	R (mm)
75	155	238	395
90	155	238	395
110	155	238	395
125	155	238	395
140	155	238	395
160	155	238	395
180	155	238	395
200	250	405	637
225	250	405	637
250	250	405	637
280	250	405	637
315	250	405	637
355	380	590	968
400	380	590	968
450	380	590	968
500	380	590	968
560	470	900	1200
630	590	900	1500



## Curva - 45° and 90°

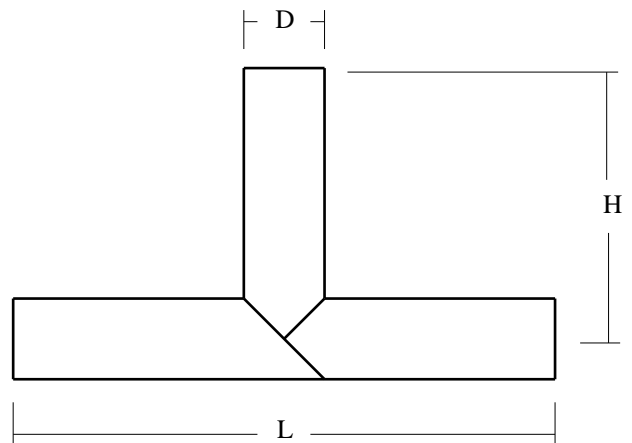
OD D (mm)	R (mm)	45° L (mm)	90° L (mm)
110	330	345	535
125	375	360	580
140	420	380	625
160	480	405	685
180	540	430	745
200	600	455	805
225	675	485	880
250	750	515	955
280	840	555	1045
315	945	585	1150
355	1065	645	1270
400	1200	705	1405
450	1350	765	1555
500	1500	830	1705



Minimum of SDR 17 for sizes 160 mm and greater.  
Minimum of SDR 11 for smaller sizes.

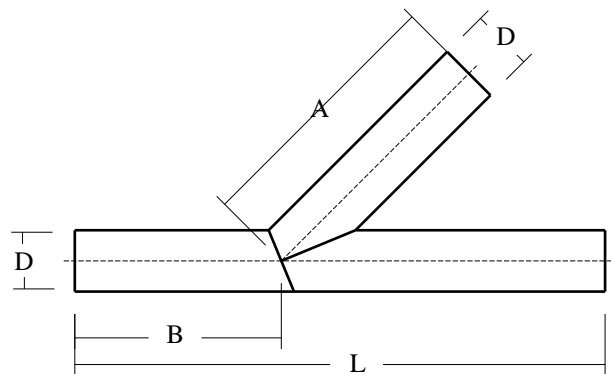
## Tees

OD D (mm)	H (mm)	L (mm)
90	200	400
110	455	910
125	465	930
140	470	940
160	480	960
180	490	980
200	500	1000
225	515	1030
250	525	1050
280	740	1480
315	760	1520
355	780	1560
400	800	1600
450	925	1850
500	950	1900
560	1180	2360
630	1215	2430



## Lateral plain ended

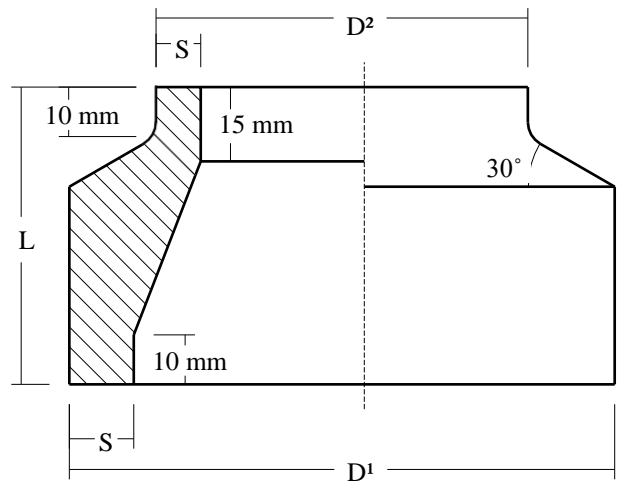
OD D (mm)	A (mm)	B (mm)	L (mm)
50	200	150	400
63	200	150	400
75	475	370	950
90	475	370	950
110	475	370	950
125	475	370	950
140	475	370	950
160	475	370	950
180	875	530	1350
200	875	530	1350
225	875	530	1350
250	875	530	1350
280	900	700	1800
315	900	700	1800
355	900	700	1800
400	900	700	1800
450	1100	870	2200
500	1100	870	2200
560	1200	950	2400
630	1200	950	2400



The internal angle of laterals is between **45° (min)** and **90° (max)**

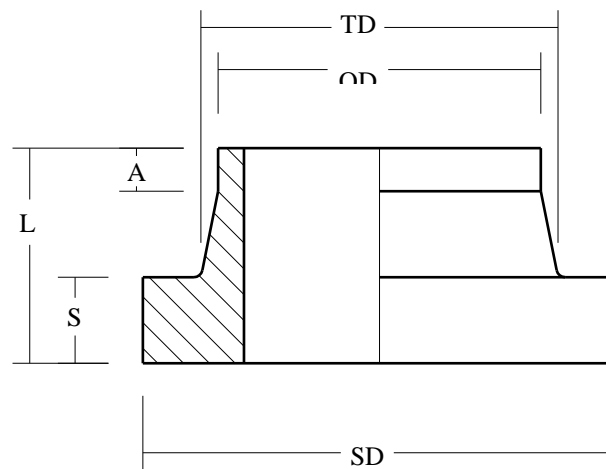
## Machined Reducing Bushes

OD D <sup>1</sup> (mm)	OD D <sup>2</sup> (mm)	L (mm)
25	20	60
32	20/25	60
40	20/25/32	60
50	25/32/40	60
63	25/32/40/50	60
75	32/40/50/63	60
90	40/50/63/75	60
110	63/75/90	60
125	75/90/110	60
140	90/110/125	80
160	90/110/125/140	80
180	110/125/140/160	80
200	140/160/180	80
225	160/180/200	80
250	180/200/225	80
280	200/225/250	80
315	250/280	80
355	280/315	90
400	315/355	90
450	355/400	90
500	400/450	90



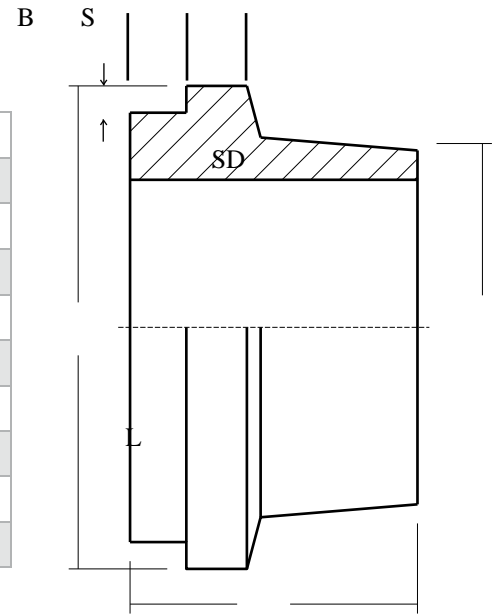
## Stub Flange Detail

Pipe OD	D	TD	A	S	L
20	45	27	30	7	50
25	56	33	28	9	50
32	65	40	27	10	50
40	73	50	24	11	50
50	82	61	23	12	50
63	98	75	16	14	50
75	110	89	14	16	50
90	129	105	43	17	80
110	158	125	37	18	80
125	158	132	35	25	80
140	188	155	27	25	80
160	212	175	27	25	80
180	212	180	20	30	80
200	268	232	28	32	100
225	268	235	38	32	100
250	320	285	25	35	100
280	320	291	35	35	100
315	370	335	25	35	100
355	430	373	40	40	120
400	482	427	29	46	120
450	540	514	10	60	130
500	585	530	10	60	120
560	645	615	10	60	130
630	685	642	20	60	120



## Tak-Stub detail

Pipe OD	SD	S	B	C	L
110	142	23	12	10	53
125	167	20	12	10	55
140	175	28	12	10	60
160	196	32.5	12	10	65
180	224	33	12	10	65
200	246	34.5	13	12	68
225	272	33	13	12	74
250	297	35	15	12	75
280	326	38	15	12	78



OD